

ORCA TX-104 IS A  
MAN OVERBOARD  
SYSTEM FOR  
COMMERCIAL  
APPLICATIONS



# Immediate Alerting

You'll know the instant someone is overboard



IN USE ON **EVERY**  
U.S. **NAVY SHIP**



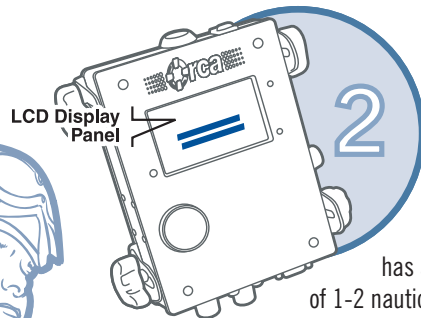
  
**BriarTek**  
INCORPORATED

[www.briartek.com](http://www.briartek.com)

San Diego, California | Alexandria, Virginia | Indianapolis, Indiana

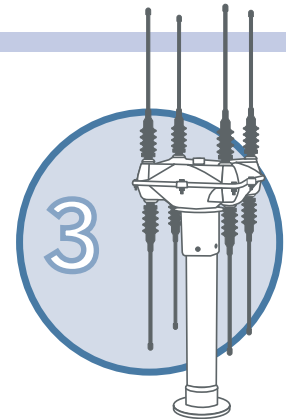


The ORCA<sup>®</sup> Man Overboard Indicator (MOBI) and Location System is an innovative system that allows for immediate, rapid recovery of a sailor who has fallen overboard.



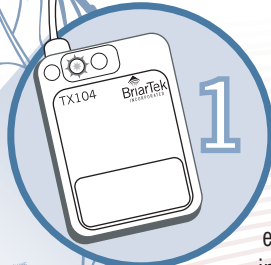
**Receiver**

The transmitter's signal triggers an audible alarm at the bridge-mounted **Receiver** which has a normal surface-to-surface range of 1-2 nautical miles. The LCD immediately displays the sailor's identification information.



**Radio Direction Finder Antenna**

The antenna locates the transmitter's VHF signal. Transmitters can be tracked up to 18 nautical miles. Relative bearing information is displayed on the **Radio Direction Finder Display**.



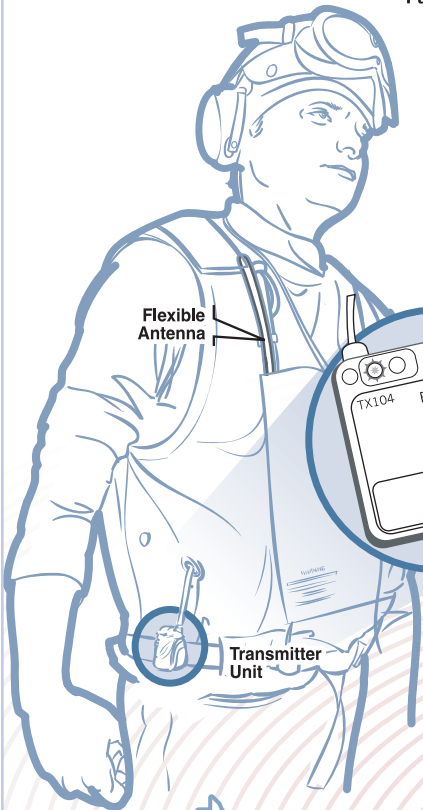
**Transmitter**

On deck, personnel are equipped with a matchbox-sized, serialized **Transmitter** unit. In an overboard emergency, 3-5 seconds of saltwater immersion automatically activates the unit, sending out a VHF signal via the flexible antenna.

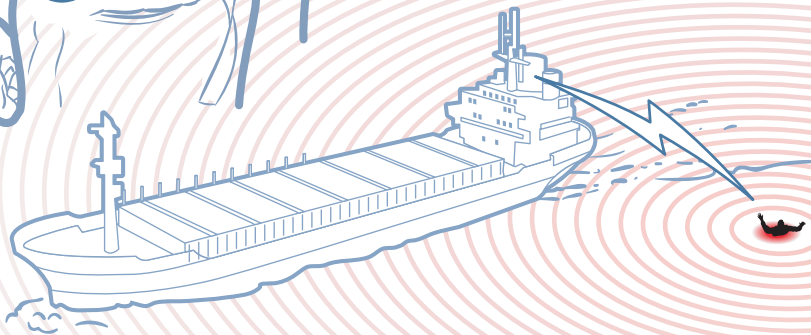


**Man Overboard Recovery**

After notification of the overboard incident by the TX-104 signal, rescue authorities are able to locate and recover the survivor.



Flexible Antenna  
Transmitter Unit



**ORCA<sup>®</sup> TX-104 Specifications**

**Transmitter**

- Size: 2.4" x 1.7" x 0.8"
- Weight: 2.5 oz.
- Frequency: 121.5 MHz
- Battery: One (1) 3-volt CR123 lithium
- Activation: Manual, fresh and salt water activated, and saltwater only activated
- Safety light: 2.25 candella daylight visible

**Receiver**

- Size: 6.81" x 5.08" x 1.81"
- Weight: 35 oz.
- Frequency: 121.5 MHz
- Current draw: (typical) 55 mA
- RF sensitivity: 0.25 – 0.60 uV
- RF input impedance: 50 ohms

**Direction Finder Display**

- Accuracy: +/-5 degrees
- Power Source: 12 – 36 VDC

**Direction-Finding Antenna**

- Type: Phase Interferometer